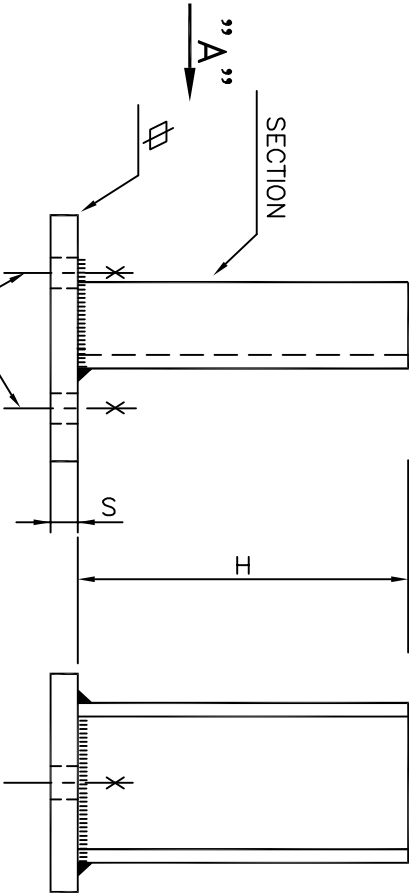
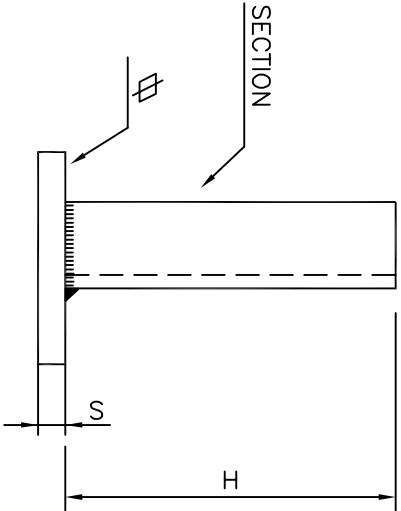


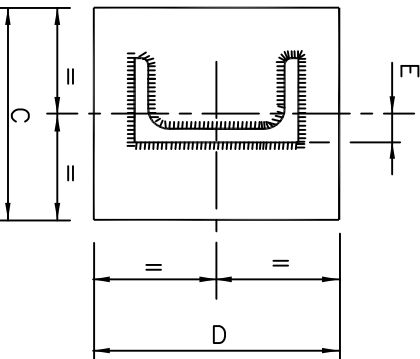
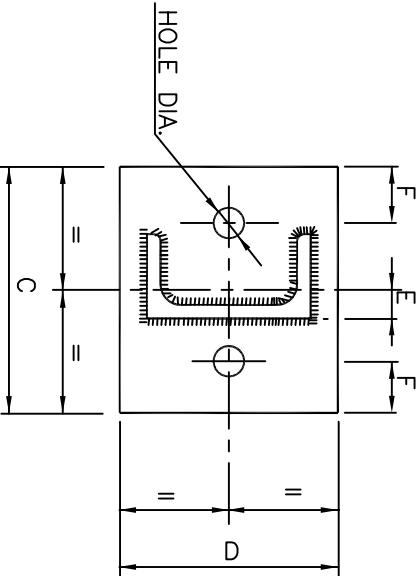
NOTES

- 1-FOR GENERAL NOTES SEE SHEET No. 4.
- 2-MATERIAL SHALL BE AS FOLLOWS:
- o) PLATE : ASTM-A283 Gr. C.
- b) CHANNEL : ASTM-A36.



ANCHOR BOLT
(SHALL BE SUPPLIED BY CIVIL)

VIEW "A"



DETAILS FOR PART 2

NOTE "2"

DETAILS FOR PART 3

NOTE "2"

TABLE "2" & "3"

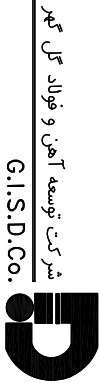
PIPE SIZE NPS DN	SECTION	MAX. H	C			D	E	F	S	HOLE DIA.	ANCHOR BOLT
			PART 2	PART 3							
2"	50	[-50	800	130	80	100	14	25	10	18	M16x140
3"	80										
4"	100		800	160	100	140	16	30			
6"	150	[-100							35	22	M20x165
8"	200										
10"	250		800	120	180	18					
12"	300	[-140	1400						12		
14"	350										
16"	400										
18"	450	[-200	2000	150	240	20					
20"	500										
24"	600										

DRAWING TITLE:

STANDARD FOR PIPE SUPPORT DRAWING

Contract No.	Document No.	Class	Rev.	Size	Scale	Sheet No.

COMPANY:



GISDCo.

INTERNAL PROCEDURE